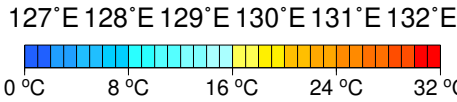
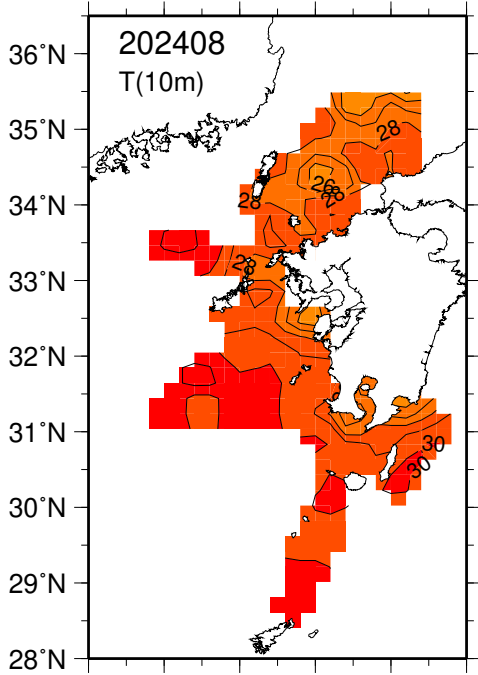
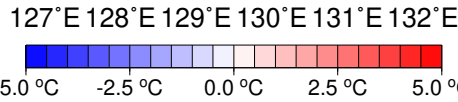
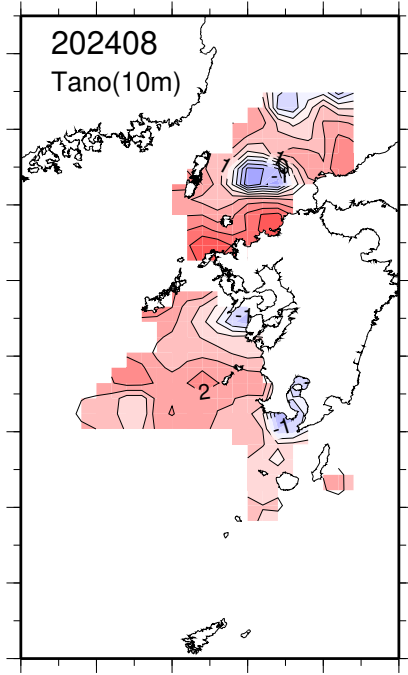


# 九州山口県海域(観測日 8/1-8/9)

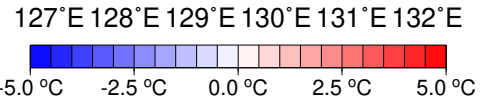
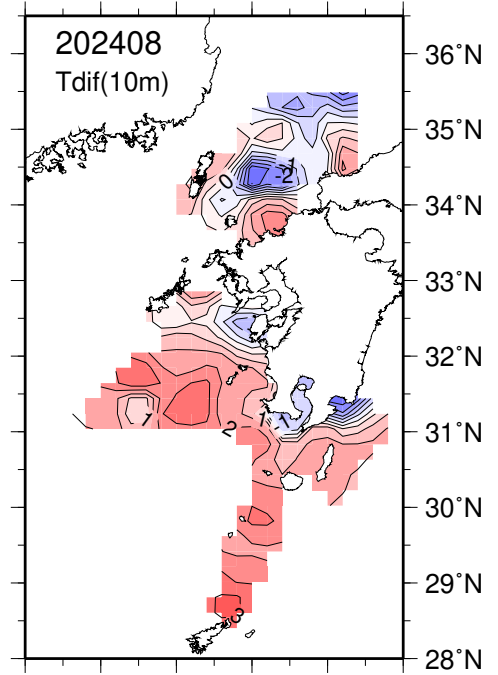
※平年は2014年~2023年.



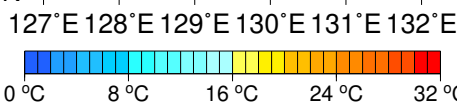
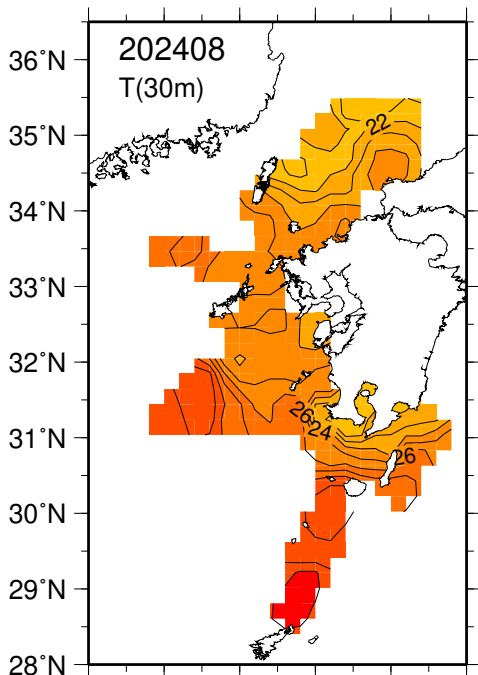
水温(10m深).



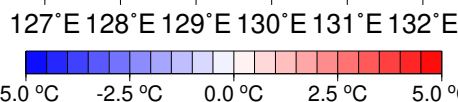
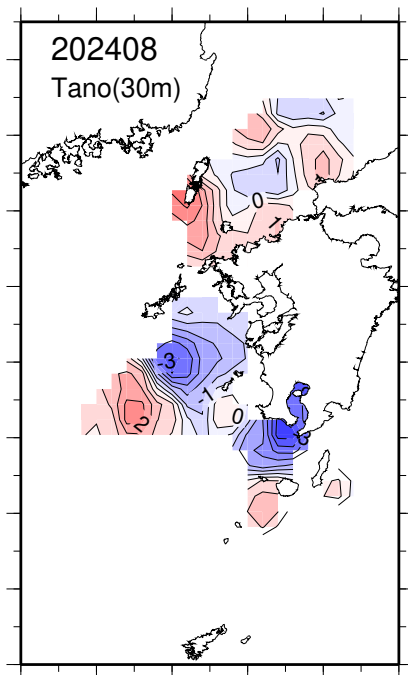
水温平年偏差(10m深).



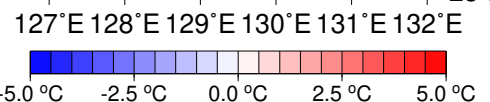
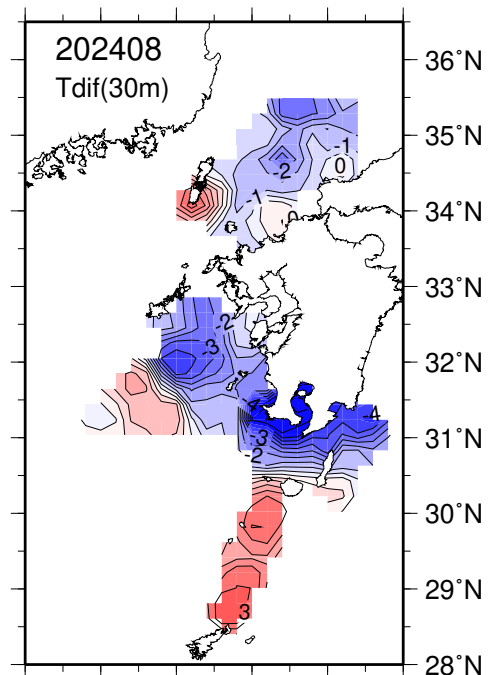
水温前年差(10m深).



水温(30m深).



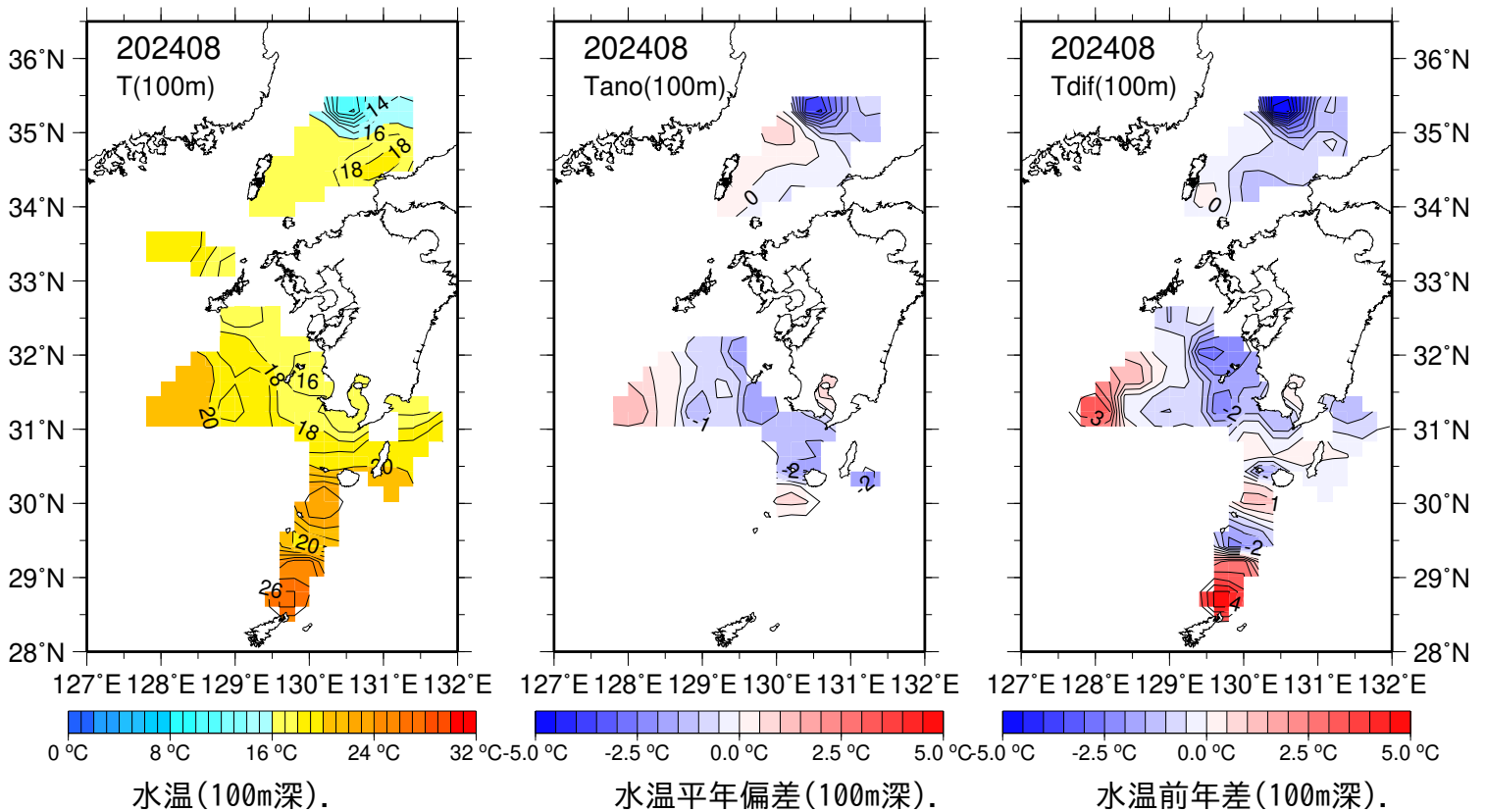
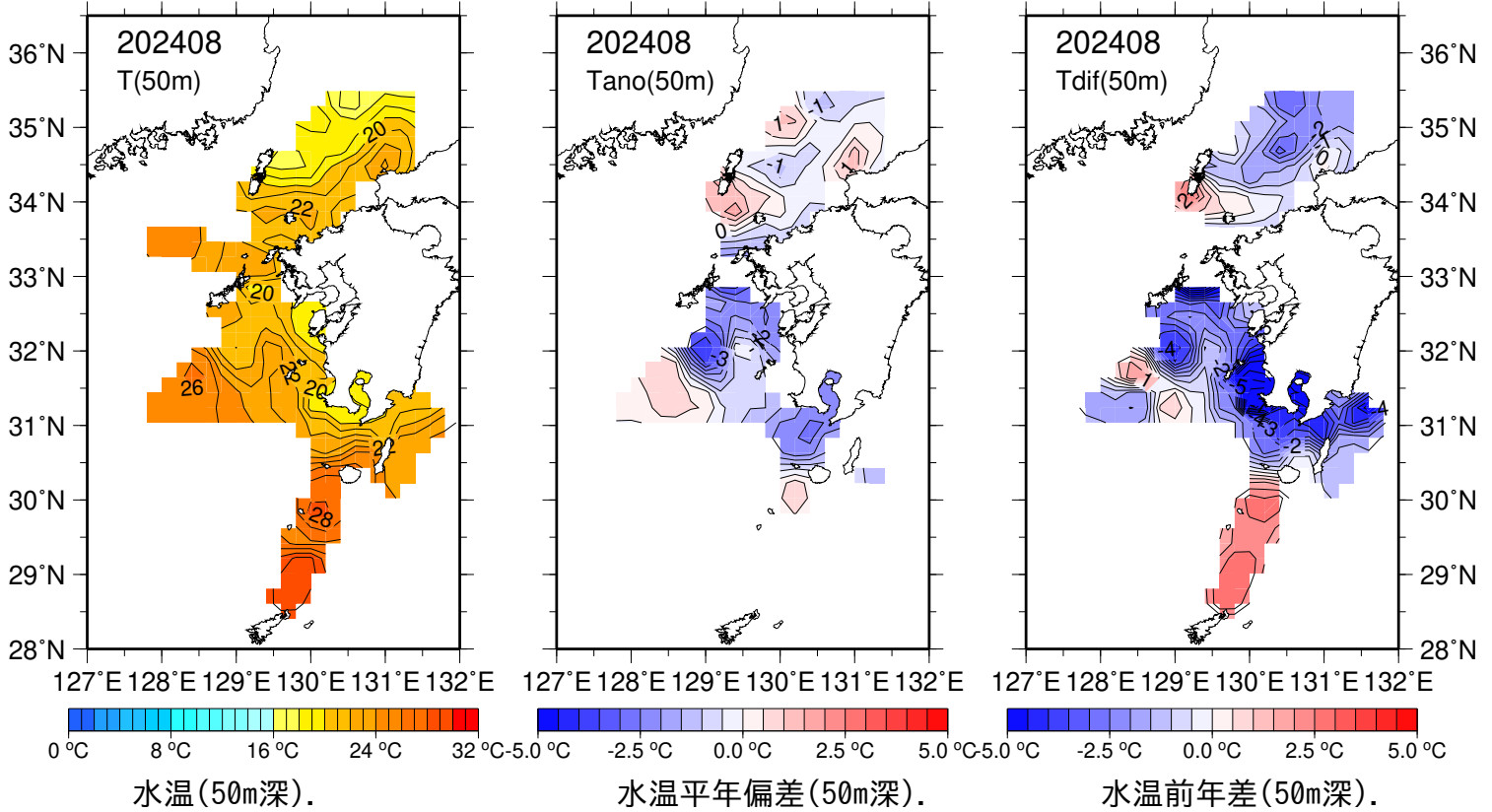
水温平年偏差(30m深).



水温前年差(30m深).

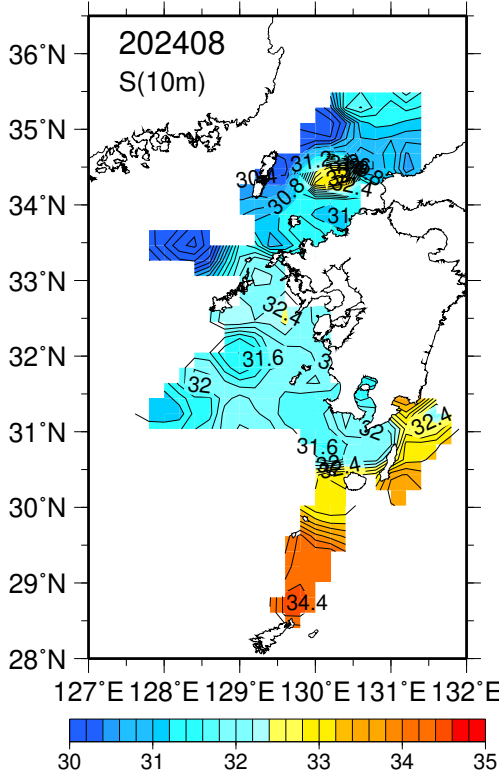
# 九州山口県海域(観測日 8/1-8/9)

※平年は2014年~2023年.

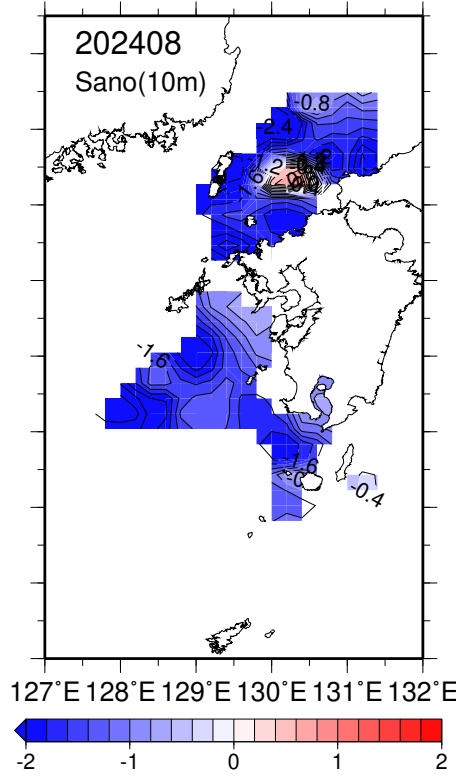


# 九州山口県海域(観測日 8/1-8/9)

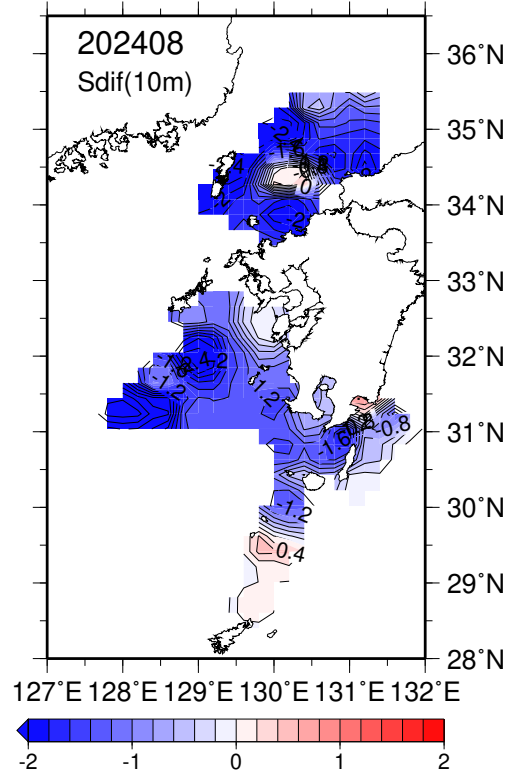
※平年は2014年~2023年.



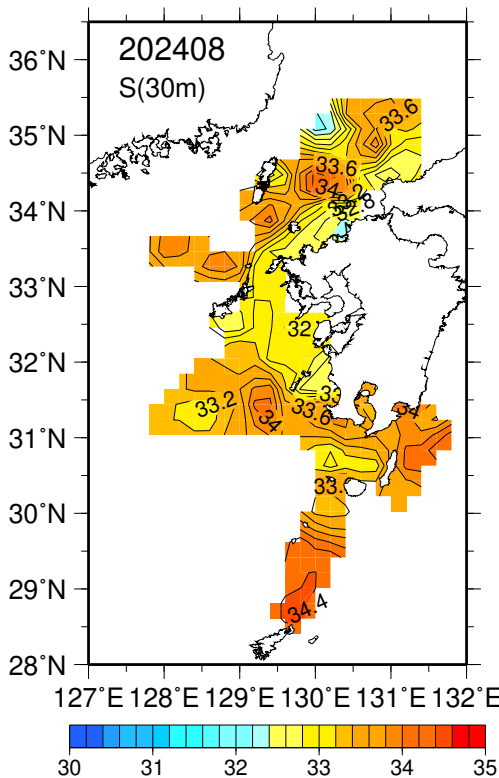
塩分(10m深).



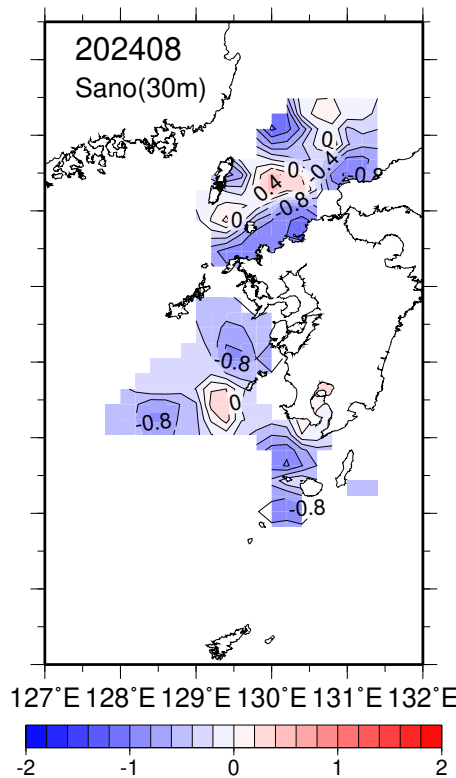
塩分平年偏差(10m深).



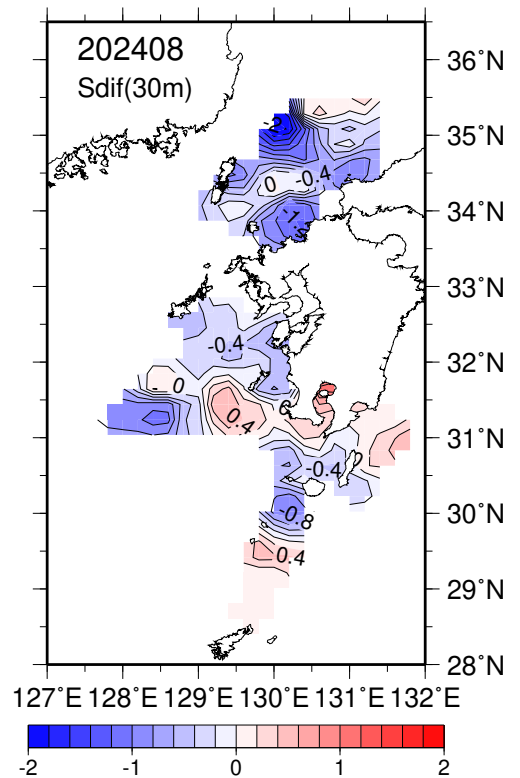
塩分前年差(10m深).



塩分(30m深).



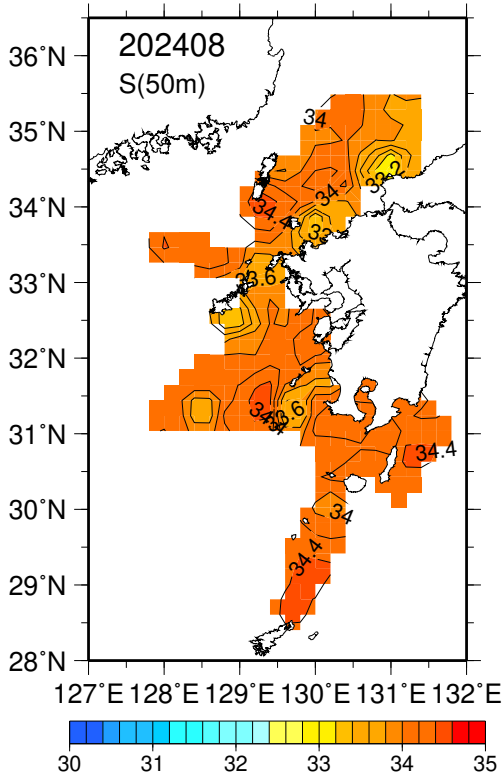
塩分平年偏差(30m深).



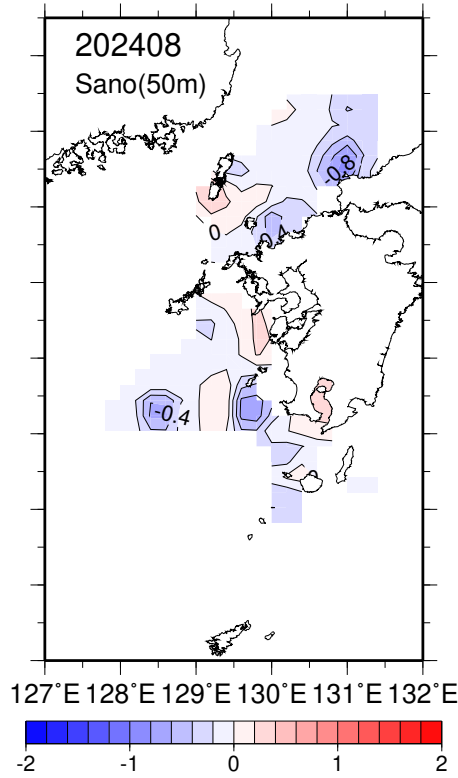
塩分前年差(30m深).

# 九州山口県海域(観測日 8/1-8/9)

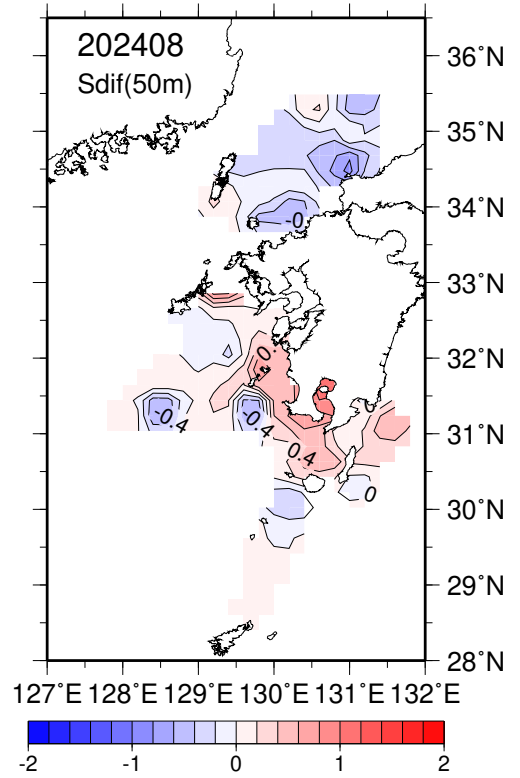
※平年は2014年~2023年.



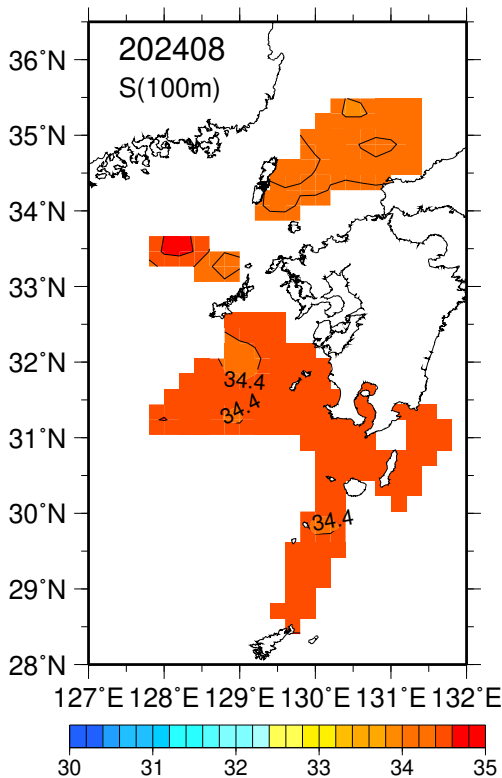
塩分(50m深).



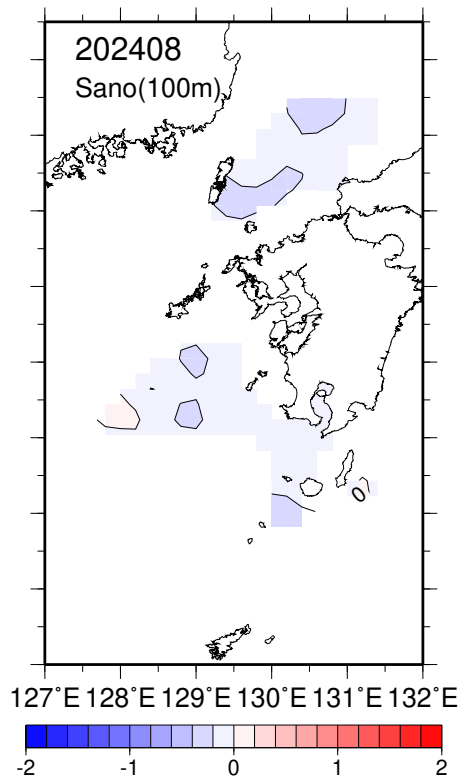
塩分平年偏差(50m深).



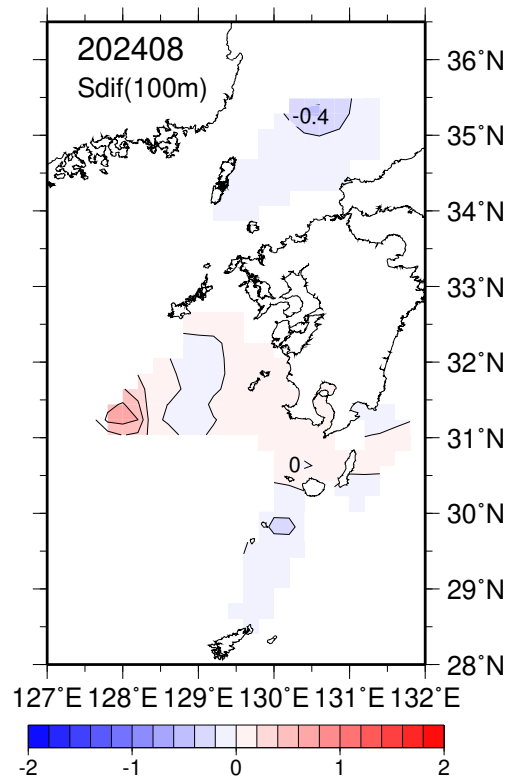
塩分前年差(50m深).



塩分(100m深).



塩分平年偏差(100m深).



塩分前年差(100m深).