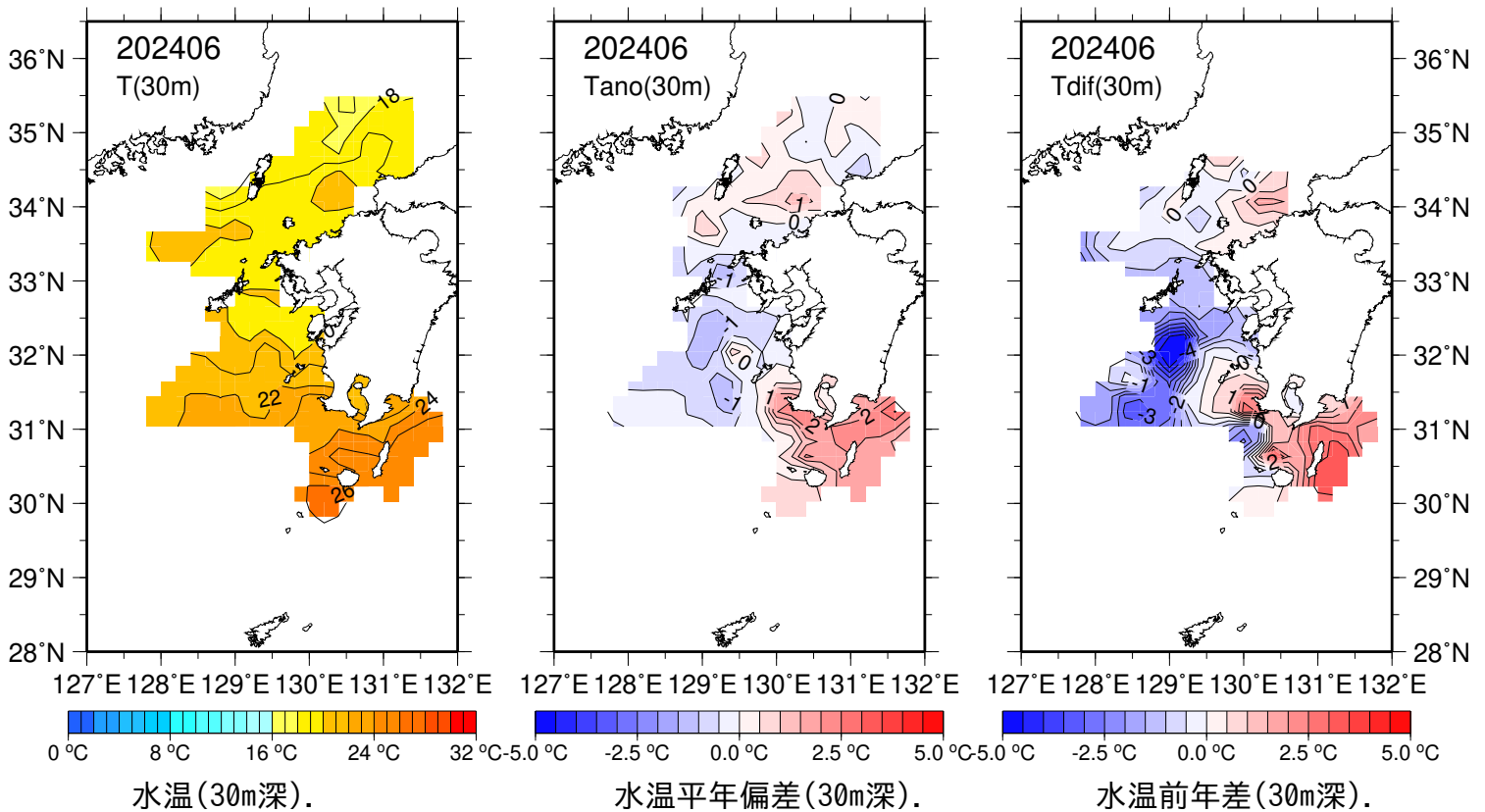
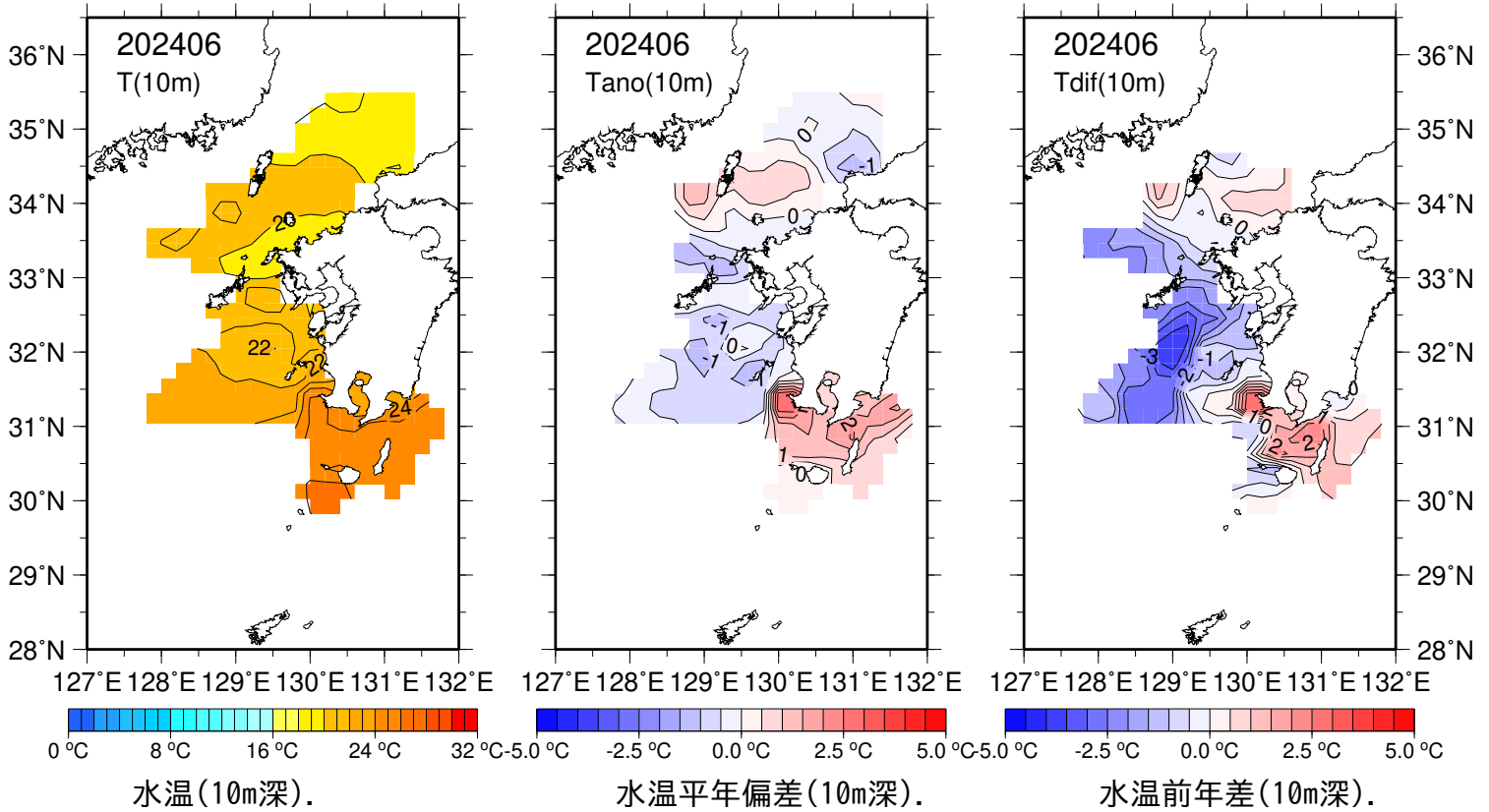


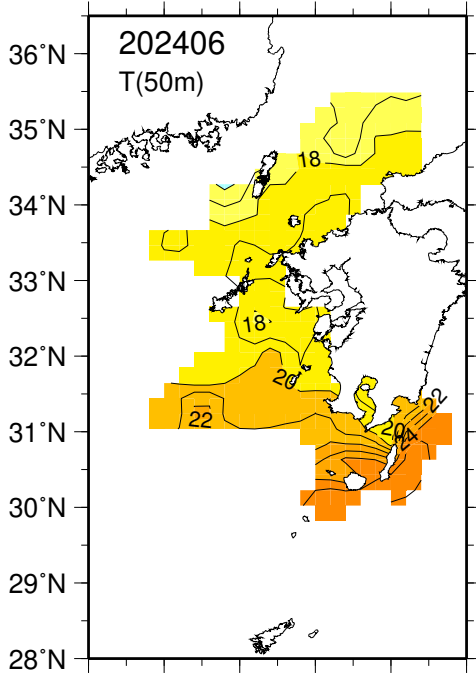
九州山口県海域(観測日 5/30-6/11)

※平年は2014年~2023年.

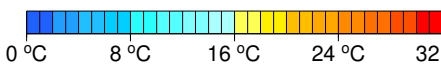


九州山口県海域(観測日 5/30-6/11)

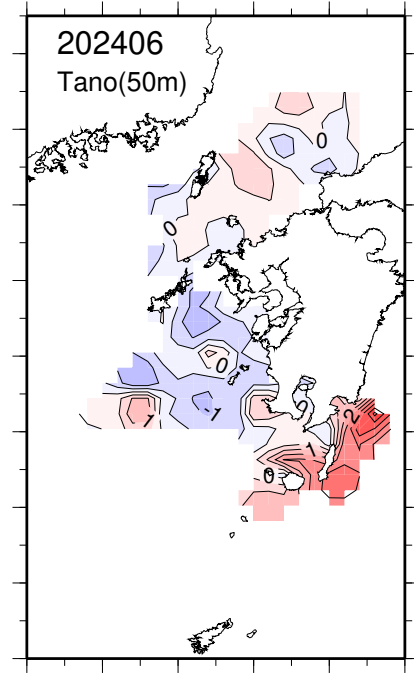
※平年は2014年～2023年.



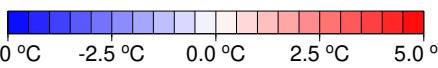
127°E 128°E 129°E 130°E 131°E 132°E



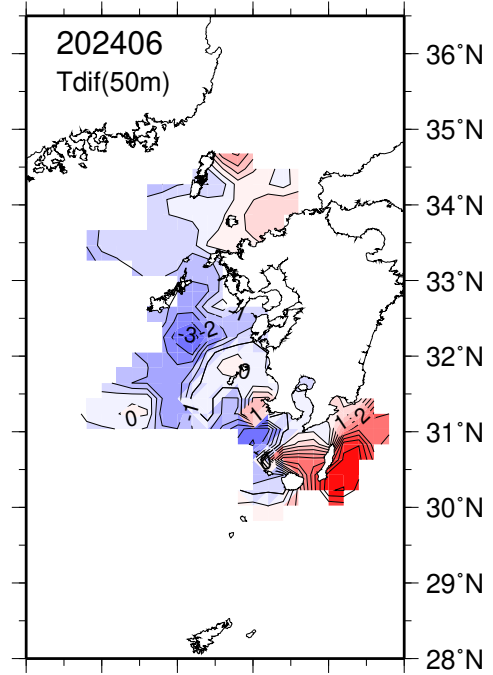
水温(50m深).



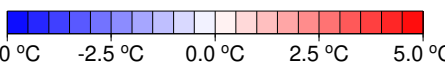
127°E 128°E 129°E 130°E 131°E 132°E



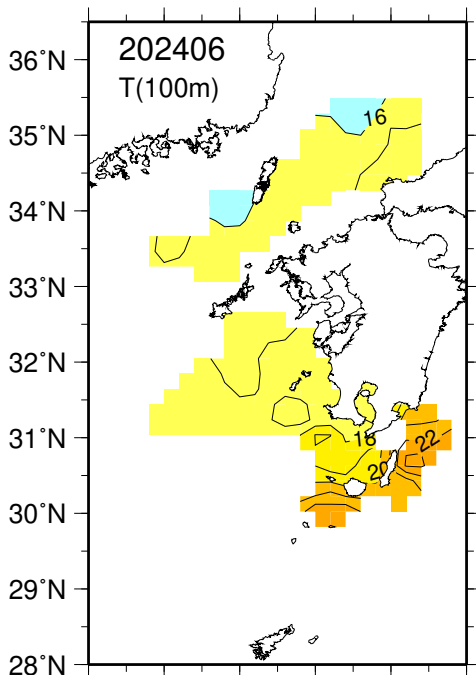
水温平年偏差(50m深).



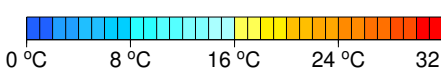
127°E 128°E 129°E 130°E 131°E 132°E



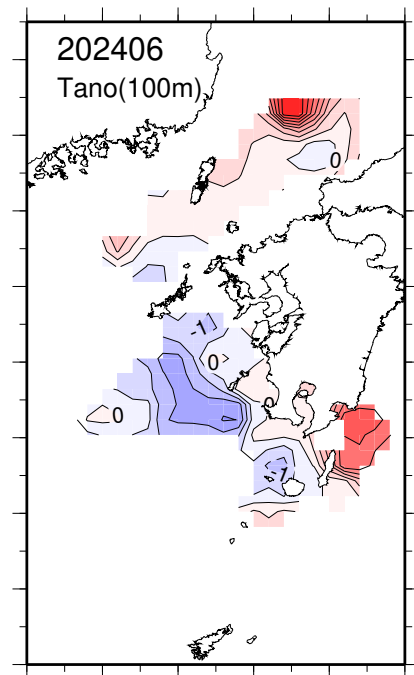
水温前年差(50m深).



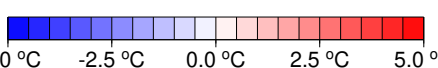
127°E 128°E 129°E 130°E 131°E 132°E



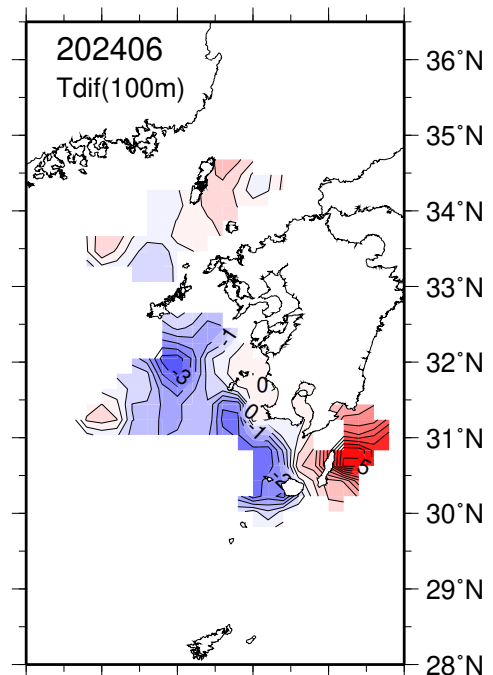
水温(100m深).



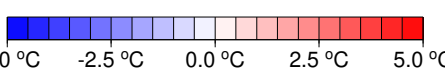
127°E 128°E 129°E 130°E 131°E 132°E



水温平年偏差(100m深).



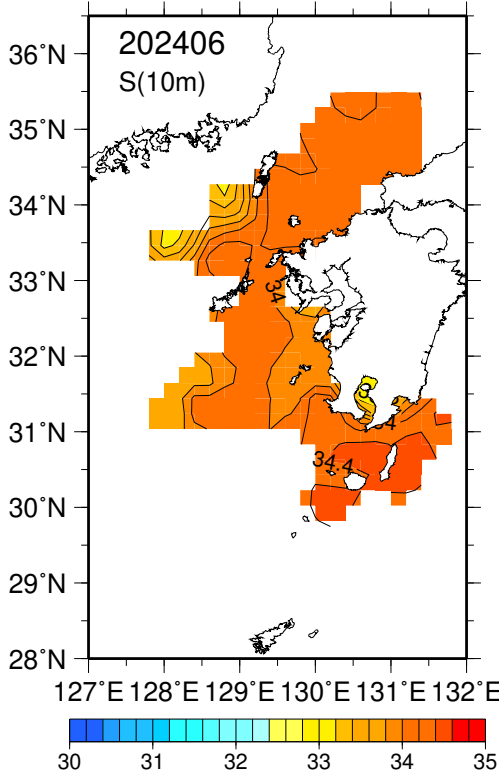
127°E 128°E 129°E 130°E 131°E 132°E



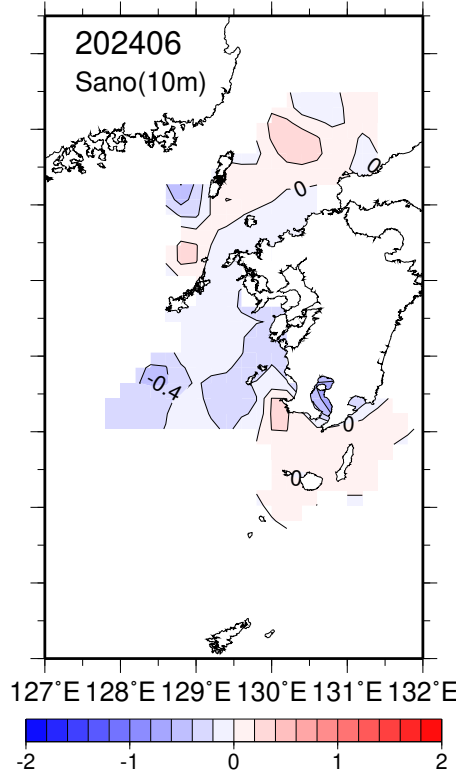
水温前年差(100m深).

九州山口県海域(観測日 5/30-6/11)

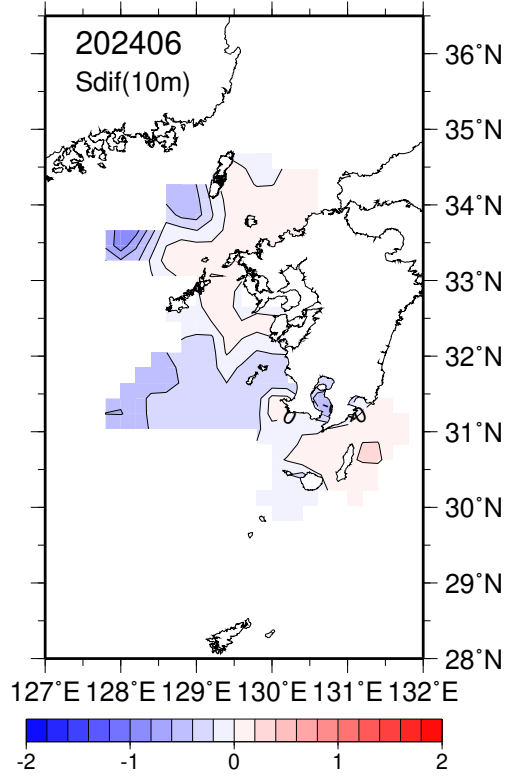
※平年は2014年～2023年.



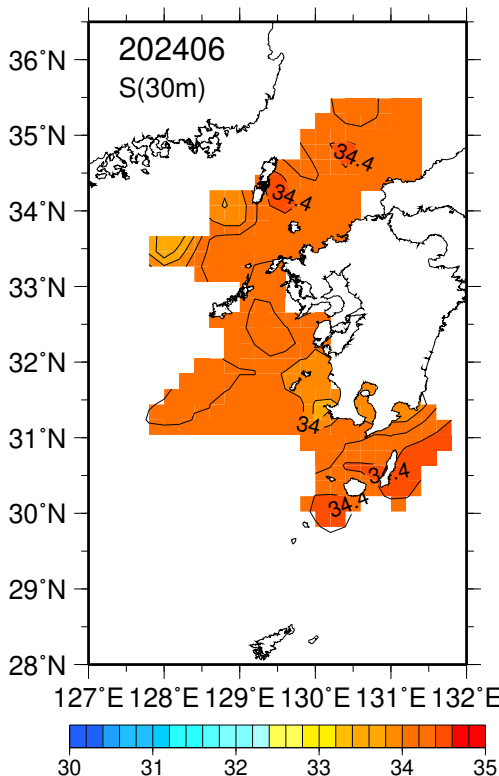
塩分(10m深).



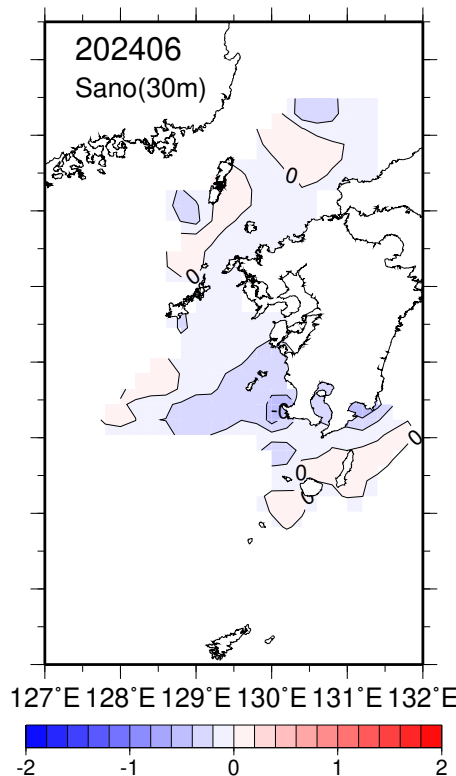
塩分平年偏差(10m深).



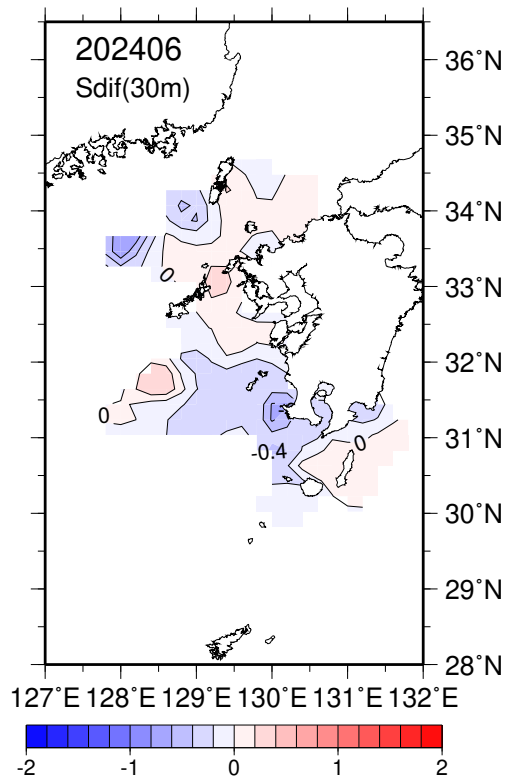
塩分前年差(10m深).



塩分(30m深).



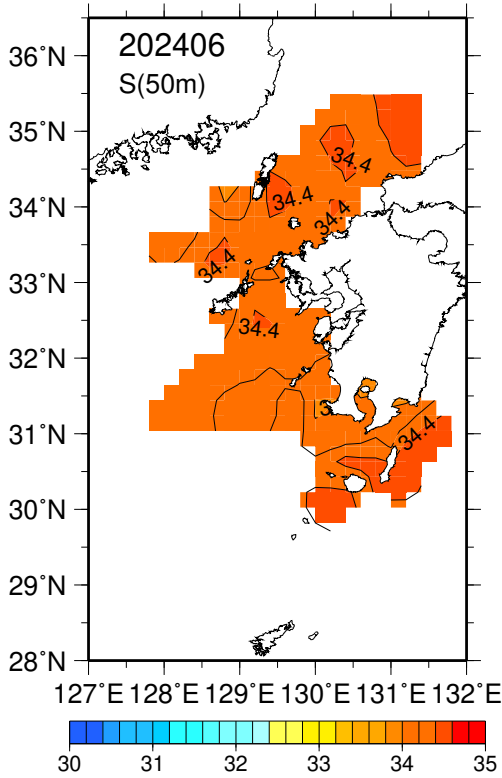
塩分平年偏差(30m深).



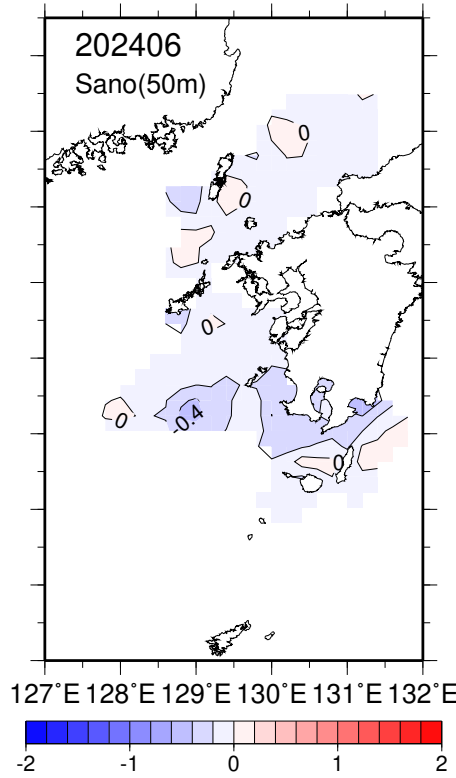
塩分前年差(30m深).

九州山口県海域(観測日 5/30-6/11)

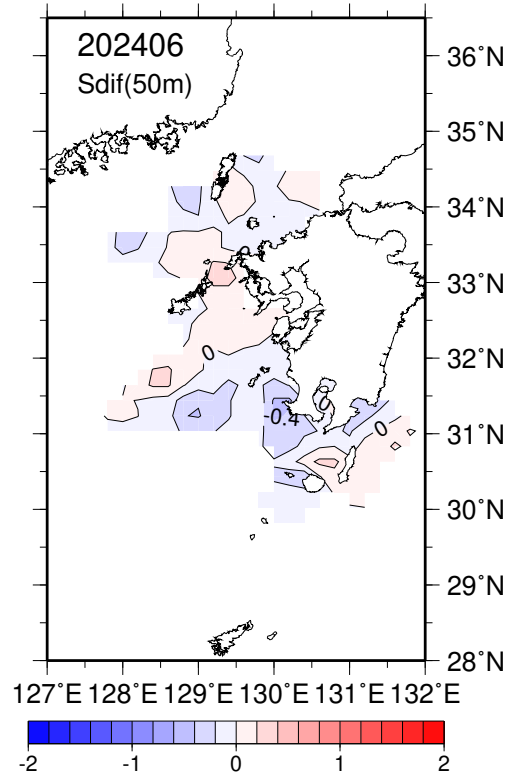
※平年は2014年~2023年.



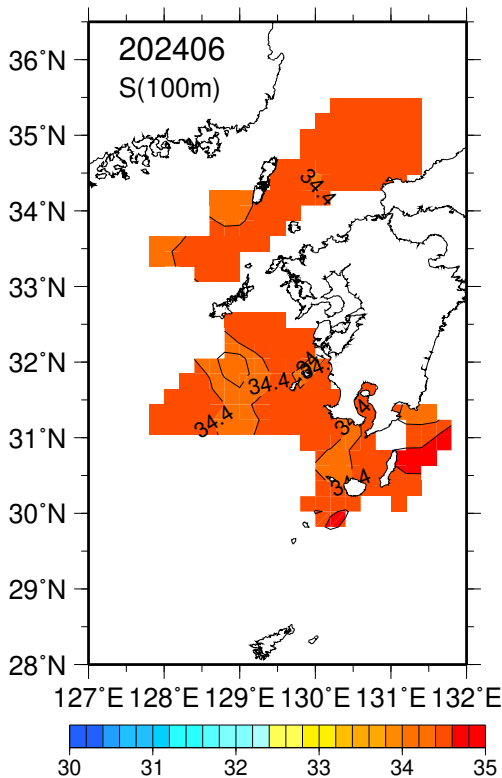
塩分(50m深).



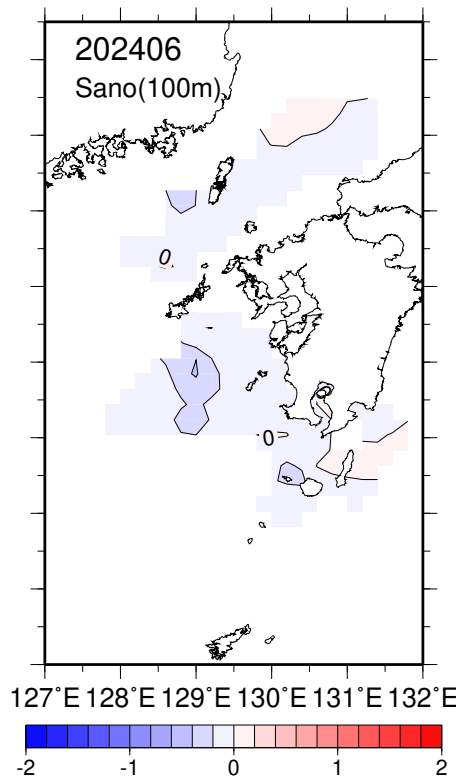
塩分平年偏差(50m深).



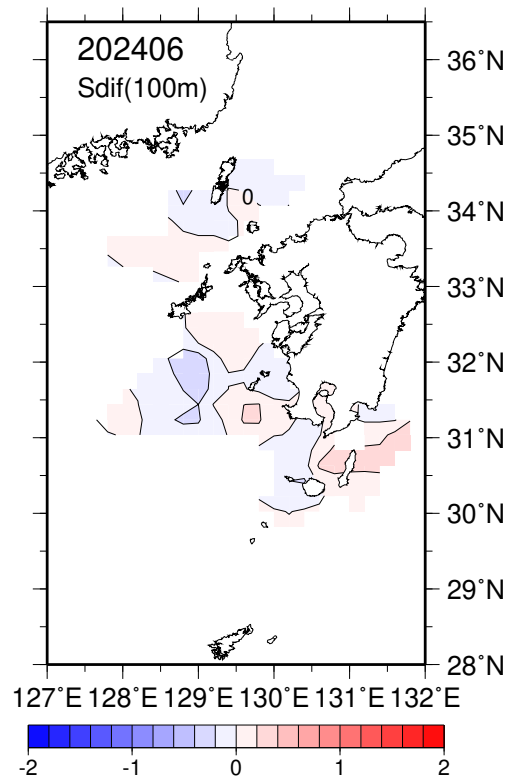
塩分前年差(50m深).



塩分(100m深).



塩分平年偏差(100m深).



塩分前年差(100m深).