

# Slime flounder

*Microstomus achne*

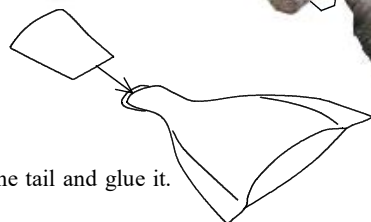
Difficulty level



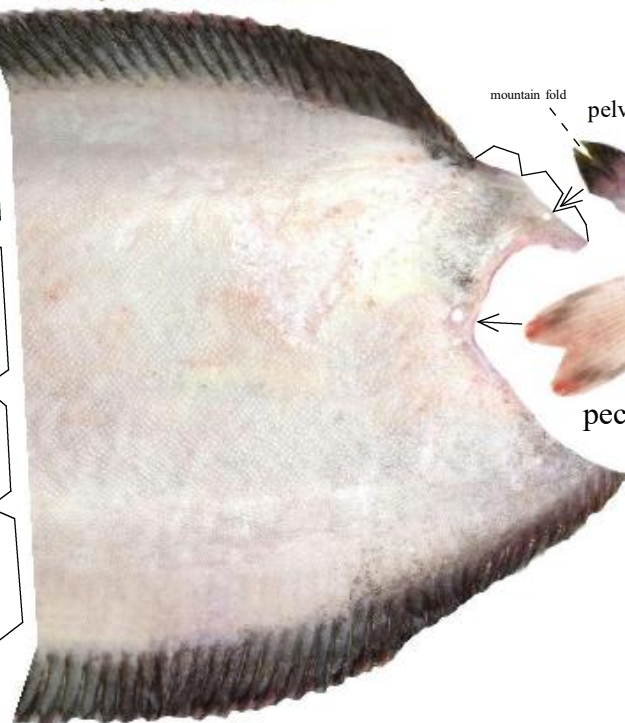
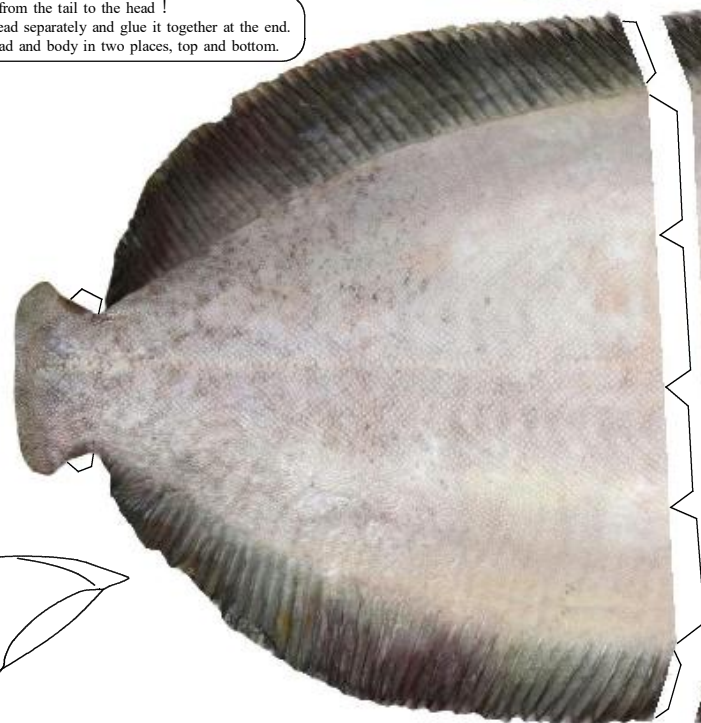
Completed photo



Let's make from the tail to the head !  
Make the head separately and glue it together at the end.  
Glue the head and body in two places, top and bottom.

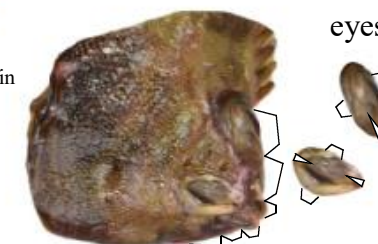


Insert the tail and glue it.



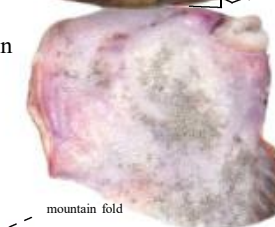
pectora fin

mountain fold  
pelvic fin



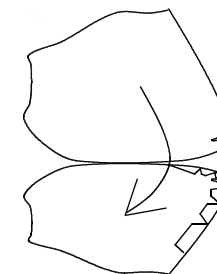
eyes

mountain fold  
pelvic fin



mountain fold

pectora fin



fold the gluing area  
and glue